



**ELECTRONIC COPY**

LG741523450  
Report verification at igi.org



October 8, 2025

IGI Report Number **LG741523450**

Description **LABORATORY GROWN DIAMOND**

Shape and Cutting Style **CUT CORNERED  
RECTANGULAR MODIFIED  
BRILLIANT**

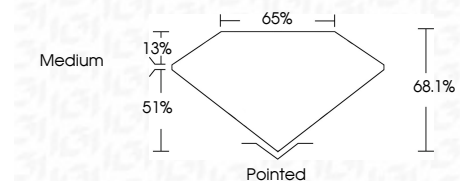
Measurements **10.21 X 7.14 X 4.86 MM**

**GRADING RESULTS**

Carat Weight **3.08 CARATS**

Color Grade **D**

Clarity Grade **VVS 2**



**ADDITIONAL GRADING INFORMATION**

Polish **EXCELLENT**

Symmetry **EXCELLENT**

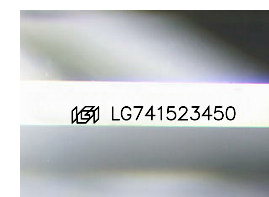
Fluorescence **NONE**

Inscription(s) **IGI LG741523450**

Comments: This Laboratory Grown Diamond was created by Chemical Vapor Deposition (CVD) growth process. Type IIa

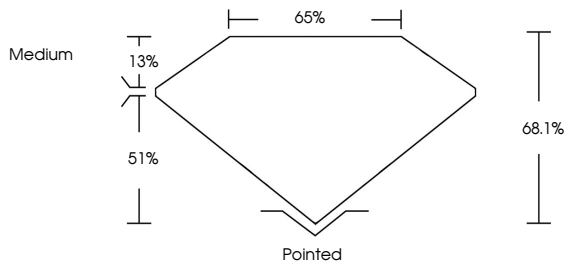


October 8, 2025  
IGI Report No LG741523450  
CUT CORNERED RECT. MODIFIED BRILLIANT  
10.21 X 7.14 X 4.86 MM  
3.08 CARATS  
D  
VVS 2  
68.1%  
51%  
Medium  
Pointed  
EXCELLENT  
EXCELLENT  
NONE  
IGI LG741523450  
Comments: This Laboratory Grown Diamond was created by Chemical Vapor Deposition (CVD) growth process. Type IIa

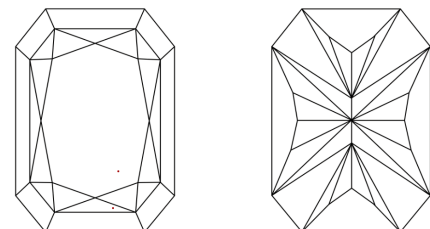


Sample Image Used

**PROPORTIONS**



**CLARITY CHARACTERISTICS**



**KEY TO SYMBOLS**

Red symbols indicate internal characteristics.  
Green symbols indicate external characteristics.

**COLOR**

D E F G H I J Faint Very Light Light

**CLARITY**

FL	IF	VVS <sup>1-2</sup>	VS <sup>1-2</sup>	SI <sup>1-2</sup>	I <sup>1-3</sup>
Flawless	Internally Flawless	Very Very Slightly Included	Very Slightly Included	Slightly Included	Included

