



**ELECTRONIC COPY**

737544146  
Report verification at [igi.org](http://igi.org)

**DIAMOND REPORT**

October 7, 2025  
IGI Report Number **737544146**  
Description **NATURAL DIAMOND**  
Shape and Cutting Style **SQUARE EMERALD CUT**  
Measurements **5.41 X 5.26 X 3.72 MM**

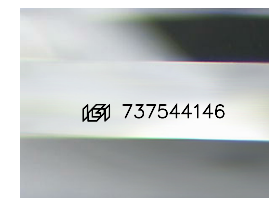
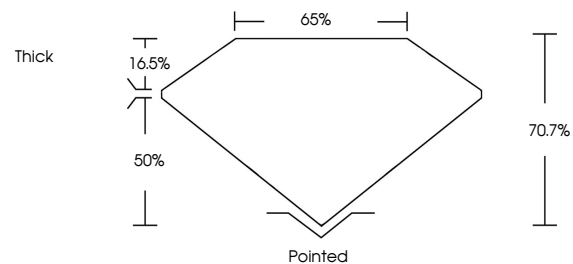
**GRADING RESULTS**

Carat Weight **1.00 CARAT**  
Color Grade **I**  
Clarity Grade **VS 2**  
Cut Grade **VERY GOOD**

**ADDITIONAL GRADING INFORMATION**

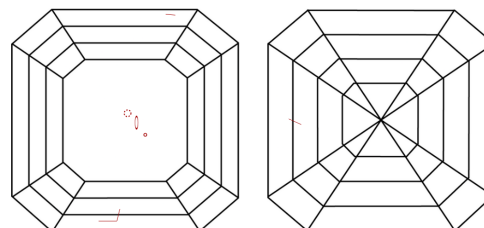
Polish **EXCELLENT**  
Symmetry **EXCELLENT**  
Fluorescence **NONE**  
Inscription(s) **737544146**

**PROPORTIONS**



Sample Image Used

**CLARITY CHARACTERISTICS**



**KEY TO SYMBOLS**

Red symbols indicate internal characteristics.  
Green symbols indicate external characteristics.

**COLOR**

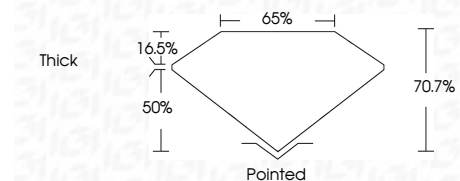
D - F	G - J	K - M	N - R	S - Z	FANCY
Colorless	Near Colorless	Slightly Tinted	Very Light Color	Light Color	

**CLARITY**

IF	VVS <sup>1-2</sup>	VS <sup>1-2</sup>	SI <sup>1-2</sup>	I <sup>1-3</sup>
Internally Flawless	Very Very Slightly Included	Very Slightly Included	Slightly Included	Included



October 7, 2025  
IGI Report Number **737544146**  
Description **NATURAL DIAMOND**  
Shape and Cutting Style **SQUARE EMERALD CUT**  
Measurements **5.41 X 5.26 X 3.72 MM**  
**GRADING RESULTS**  
Carat Weight **1.00 CARAT**  
Color Grade **I**  
Clarity Grade **VS 2**  
Cut Grade **VERY GOOD**



**ADDITIONAL GRADING INFORMATION**

Polish **EXCELLENT**  
Symmetry **EXCELLENT**  
Fluorescence **NONE**  
Inscription(s) **737544146**



**IGI**



October 7, 2025  
IGI Report No 737544146  
**SQUARE EMERALD CUT**  
5.41 X 5.26 X 3.72 MM  
1.00 CARAT  
I  
VS 2  
VERY GOOD  
70.7%  
65%  
Thick  
Pointed  
EXCELLENT  
EXCELLENT  
NONE  
NONE  
 737544146