



**ELECTRONIC COPY**

LG724530132  
Report verification at igi.org



July 25, 2025

IGI Report Number **LG724530132**

Description **LABORATORY GROWN DIAMOND**

Shape and Cutting Style **ROUND BRILLIANT**

Measurements **9.36 - 9.43 X 5.56 MM**

**GRADING RESULTS**

Carat Weight **3.01 CARATS**

Color Grade **D**

Clarity Grade **VS 1**

Cut Grade **IDEAL**

July 25, 2025

IGI Report Number **LG724530132**

Description **LABORATORY GROWN DIAMOND**

Shape and Cutting Style **ROUND BRILLIANT**

Measurements **9.36 - 9.43 X 5.56 MM**

**GRADING RESULTS**

Carat Weight **3.01 CARATS**

Color Grade **D**

Clarity Grade **VS 1**

Cut Grade **IDEAL**

**ADDITIONAL GRADING INFORMATION**

Polish **EXCELLENT**

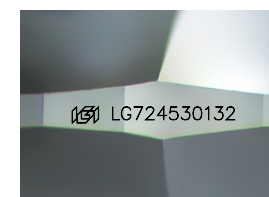
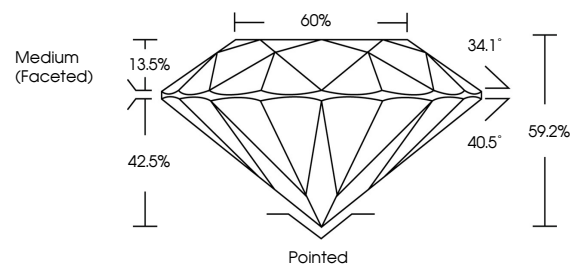
Symmetry **EXCELLENT**

Fluorescence **NONE**

Inscription(s) **IGI LG724530132**

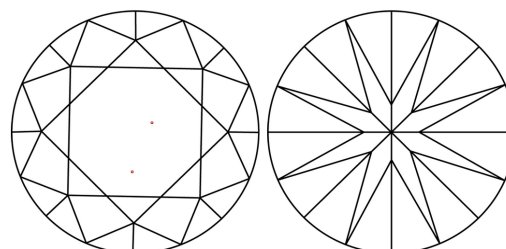
Comments: This Laboratory Grown Diamond was created by Chemical Vapor Deposition (CVD) growth process.  
Type IIa

**PROPORTIONS**



Sample Image Used

**CLARITY CHARACTERISTICS**



**KEY TO SYMBOLS**

Red symbols indicate internal characteristics.  
Green symbols indicate external characteristics.

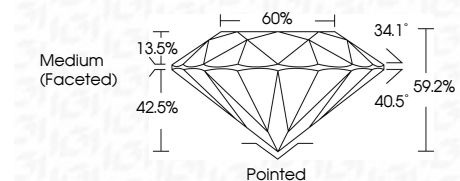
**COLOR**

D E F G H I J Faint Very Light Light

**CLARITY**

IF WS<sup>1-2</sup> VS<sup>1-2</sup> SI<sup>1-2</sup> I<sup>1-3</sup>

Internally Flawless Very Very Slightly Included Very Slightly Included Slightly Included Included



**ADDITIONAL GRADING INFORMATION**

Polish **EXCELLENT**

Symmetry **EXCELLENT**

Fluorescence **NONE**

Inscription(s) **IGI LG724530132**

Comments: This Laboratory Grown Diamond was created by Chemical Vapor Deposition (CVD) growth process.  
Type IIa



**IGI**



|                           |                           |                       |             |               |           |       |       |                  |         |           |           |              |                 |
|---------------------------|---------------------------|-----------------------|-------------|---------------|-----------|-------|-------|------------------|---------|-----------|-----------|--------------|-----------------|
| July 25, 2025             | IGI Report No LG724530132 | 3.01 CARATS           | D           | VS 1          | IDEAL     | 59.2% | 60%   | Medium (Faceted) | Pointed | EXCELLENT | EXCELLENT | NONE         | IGI LG724530132 |
| IGI Report No LG724530132 | ROUND BRILLIANT           | 9.36 - 9.43 X 5.56 MM | Color Grade | Clarity Grade | Cut Grade | Depth | Table | Girdle           | Culet   | Polish    | Symmetry  | Fluorescence | Inscription(s)  |
|                           |                           |                       |             |               |           |       |       |                  |         |           |           |              |                 |

Comments: This Laboratory Grown Diamond was created by Chemical Vapor Deposition (CVD) growth process.  
Type IIa