



October 31, 2025  
**IGI Report Number** LG746519530  
**ROUND BRILLIANT**  
**LABORATORY GROWN DIAMOND**  
**4.37 - 4.41 X 2.62 MM**  
 Carat Weight **0.31 CARAT**  
 Color Grade **D**  
 Clarity Grade **VVS 1**  
 Cut Grade **EXCELLENT**  
 Polish **EXCELLENT**  
 Symmetry **EXCELLENT**  
 Fluorescence **NONE**  
 Inscription(s) **IGI LG746519530**  
 Comments: This Laboratory Grown Diamond was created by Chemical Vapor Deposition (CVD) growth process. Type IIa

**LABORATORY GROWN DIAMOND REPORT**

October 31, 2025  
 IGI Report Number **LG746519530**  
 Description **LABORATORY GROWN DIAMOND**  
 Shape and Cutting Style **ROUND BRILLIANT**  
 Measurements **4.37 - 4.41 X 2.62 MM**

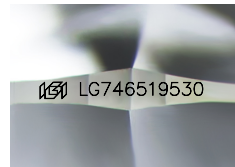
**GRADING RESULTS**

Carat Weight **0.31 CARAT**  
 Color Grade **D**  
 Clarity Grade **VVS 1**  
 Cut Grade **EXCELLENT**

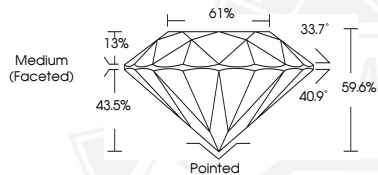
**ADDITIONAL GRADING INFORMATION**

Polish **EXCELLENT**  
 Symmetry **EXCELLENT**  
 Fluorescence **NONE**  
 Inscription(s) **IGI LG746519530**

Comments: This Laboratory Grown Diamond was created by Chemical Vapor Deposition (CVD) growth process. Type IIa



Sample Image Used



October 31, 2025  
**IGI Report Number** LG746519530  
**ROUND BRILLIANT**  
**LABORATORY GROWN DIAMOND**  
**4.37 - 4.41 X 2.62 MM**  
 Carat Weight **0.31 CARAT**  
 Color Grade **D**  
 Clarity Grade **VVS 1**  
 Cut Grade **EXCELLENT**  
 Polish **EXCELLENT**  
 Symmetry **EXCELLENT**  
 Fluorescence **NONE**  
 Inscription(s) **IGI LG746519530**  
 Comments: This Laboratory Grown Diamond was created by Chemical Vapor Deposition (CVD) growth process. Type IIa



THIS DOCUMENT WAS PRODUCED WITH THE FOLLOWING SECURITY MEASURES: SPECIAL DOCUMENT PAPER, INK SCREENS, WATERMARK, BACKGROUND DESIGNS, HOLOGRAM AND OTHER SECURITY FEATURES NOT LISTED AND DO EXCEED DOCUMENT SECURITY INDUSTRY GUIDELINES.