



ELECTRONIC COPY

LABORATORY GROWN DIAMOND REPORT

October 14, 2024  
IGI Report Number LG659441975  
Description LABORATORY GROWN DIAMOND  
Shape and Cutting Style EMERALD CUT  
Measurements 11.50 X 8.28 X 5.58 MM

GRADING RESULTS

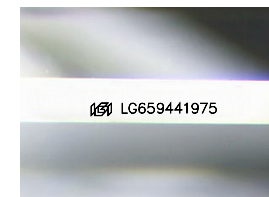
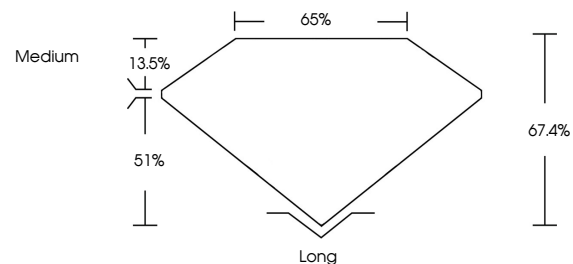
Carat Weight 5.08 CARATS  
Color Grade E  
Clarity Grade VS 1

ADDITIONAL GRADING INFORMATION

Polish EXCELLENT  
Symmetry EXCELLENT  
Fluorescence NONE  
Inscription(s) LG659441975

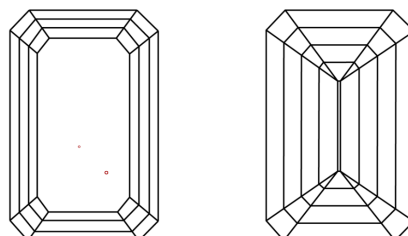
Comments: This Laboratory Grown Diamond was created by Chemical Vapor Deposition (CVD) growth process.  
Type IIa

PROPORTIONS



Sample Image Used

CLARITY CHARACTERISTICS



KEY TO SYMBOLS

Red symbols indicate internal characteristics.  
Green symbols indicate external characteristics.

COLOR

D E F G H I J Faint Very Light Light

CLARITY

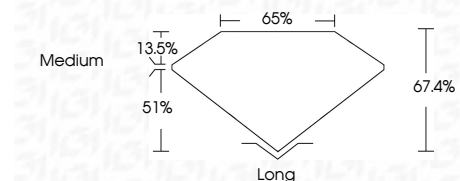
IF VS 1-2 VS 1-2 SI 1-2 I 1-3  
Internally Flawless Very Very Slightly Included Very Slightly Included Slightly Included Included



October 14, 2024  
IGI Report Number LG659441975  
Description LABORATORY GROWN DIAMOND  
Shape and Cutting Style EMERALD CUT  
Measurements 11.50 X 8.28 X 5.58 MM

GRADING RESULTS

Carat Weight 5.08 CARATS  
Color Grade E  
Clarity Grade VS 1



ADDITIONAL GRADING INFORMATION

Polish EXCELLENT  
Symmetry EXCELLENT  
Fluorescence NONE  
Inscription(s) LG659441975  
Comments: This Laboratory Grown Diamond was created by Chemical Vapor Deposition (CVD) growth process.  
Type IIa



IGI



October 14, 2024  
IGI Report No. LG659441975  
EMERALD CUT  
11.50 X 8.28 X 5.58 MM  
5.08 CARATS  
E  
VS 1  
67.4%  
65%  
Medium  
Long  
EXCELLENT  
EXCELLENT  
NONE  
IGI LG659441975  
Comments: This Laboratory Grown Diamond was created by Chemical Vapor Deposition (CVD) growth process.  
Type IIa