



ELECTRONIC COPY

LG668428943
Report verification at igi.org



December 7, 2024

IGI Report Number **LG668428943**

Description **LABORATORY GROWN DIAMOND**

Shape and Cutting Style **EMERALD CUT**

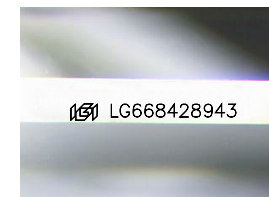
Measurements **7.82 X 5.34 X 3.66 MM**

GRADING RESULTS

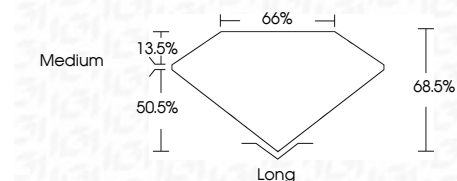
Carat Weight **1.52 CARAT**

Color Grade **D**

Clarity Grade **VS 1**



Sample Image Used



ADDITIONAL GRADING INFORMATION

Polish **EXCELLENT**

Symmetry **EXCELLENT**

Fluorescence **NONE**

Inscription(s) **IGI LG668428943**

Comments: As Grown - No indication of post-growth treatment.

This Laboratory Grown Diamond was created by High Pressure High Temperature (HPHT) growth process. Type II

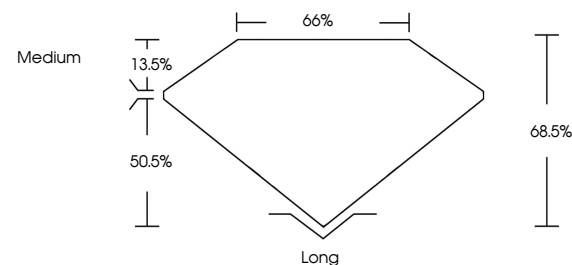


IGI

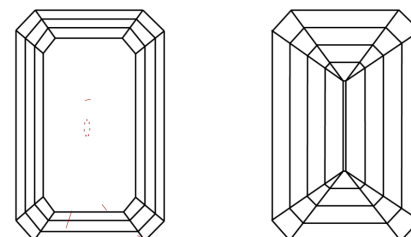
December 7, 2024	IGI Report No. LG668428943
EMERALD CUT	1.52 CARAT
7.82 X 5.34 X 3.66 MM	D
Carat Weight	VS 1
Color Grade	68.5%
Clarity Grade	65%
Depth	Medium
Table	Long
Girdle	EXCELLENT
Culet	EXCELLENT
Polish	NONE
Symmetry	NONE
Fluorescence	IGI LG668428943
Inscription(s)	

Comments: As Grown - No indication of post-growth treatment. This Laboratory Grown Diamond was created by High Pressure High Temperature (HPHT) growth process. Type II

PROPORTIONS



CLARITY CHARACTERISTICS



KEY TO SYMBOLS

Red symbols indicate internal characteristics.
Green symbols indicate external characteristics.

COLOR

D E F G H I J Faint Very Light Light

CLARITY

IF	VS ¹⁻²	VS ¹⁻²	SI ¹⁻²	I ¹⁻³
Internally Flawless	Very Very Slightly Included	Very Slightly Included	Slightly Included	Included

