



**ELECTRONIC COPY**

LG792619367  
Report verification at igi.org



April 23, 2026  
IGI Report Number **LG792619367**  
Description **LABORATORY GROWN DIAMOND**  
Shape and Cutting Style **CUT CORNERED  
RECTANGULAR MODIFIED  
BRILLIANT**  
Measurements **9.61 X 7.32 X 5.00 MM**  
**GRADING RESULTS**  
Carat Weight **3.06 CARATS**  
Color Grade **F**  
Clarity Grade **VVS 2**

April 23, 2026  
IGI Report Number **LG792619367**  
Description **LABORATORY GROWN DIAMOND**  
Shape and Cutting Style **CUT CORNERED RECTANGULAR  
MODIFIED BRILLIANT**  
Measurements **9.61 X 7.32 X 5.00 MM**

**GRADING RESULTS**

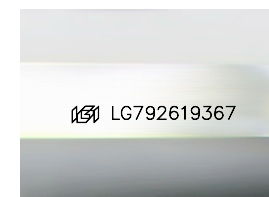
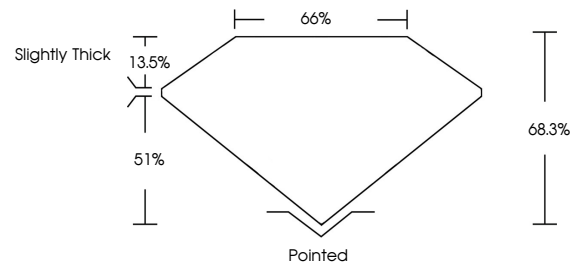
Carat Weight **3.06 CARATS**  
Color Grade **F**  
Clarity Grade **VVS 2**

**ADDITIONAL GRADING INFORMATION**

Polish **EXCELLENT**  
Symmetry **EXCELLENT**  
Fluorescence **NONE**  
Inscription(s) **IGI LG792619367**

Comments: This Laboratory Grown Diamond was created by Chemical Vapor Deposition (CVD) growth process.  
Type IIa

**PROPORTIONS**



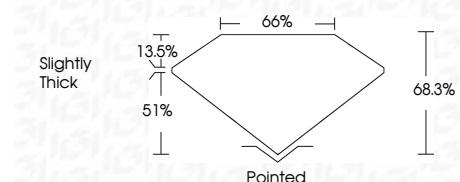
Sample Image Used

**COLOR**

D E F G H I J Faint Very Light Light

**CLARITY**

FL	IF	VVS <sup>1-2</sup>	VS <sup>1-2</sup>	SI <sup>1-2</sup>	I <sup>1-3</sup>
Flawless	Internally Flawless	Very Very Slightly Included	Very Slightly Included	Slightly Included	Included



**ADDITIONAL GRADING INFORMATION**

Polish **EXCELLENT**  
Symmetry **EXCELLENT**  
Fluorescence **NONE**  
Inscription(s) **IGI LG792619367**  
Comments: This Laboratory Grown Diamond was created by Chemical Vapor Deposition (CVD) growth process.  
Type IIa



April 23, 2026  
IGI Report No. LG792619367  
CUT CORNERED RECT. MODIFIED BRILLIANT  
3.06 CARATS  
F  
9.61 X 7.32 X 5.00 MM  
Color Grade  
VVS 2  
Depth 68.3%  
Table 66%  
Girdle  
Slightly Thick  
Culet  
Pointed  
Polish  
EXCELLENT  
Symmetry  
EXCELLENT  
Fluorescence  
NONE  
Inscription(s)  
IGI LG792619367  
Comments: This Laboratory Grown Diamond was created by Chemical Vapor Deposition (CVD) growth process.  
Type IIa